



# Suffolk Biodiversity Partnership Partners' News April 2009

## In this issue:

| Partners News  | Page No. |
|--|----------|
| <a href="#">Encouraging community biodiversity, Suffolk Coastal District Council</a>   | 1        |
| <a href="#">Butterfly futures in Dunwich Forest, Butterfly Conservation</a>            | 2        |
| <a href="#">Suffolk Community Barn Owl Project linked to Harvest Mouse study</a>       | 3        |
| <a href="#">Suffolk hedgerow survey, Guy Ackers</a>                                    | 5        |
| <a href="#">Stag beetle distribution, Colin Hawes</a>                                  | 6        |
| <a href="#">April Flash of Good News, Green Light Trust</a>                            | 7        |
| <a href="#">Mid Suffolk District Council sign up as a 'Breathing Places Community'</a> | 8        |
| <a href="#">Update from Suffolk Biodiversity Partnership</a>                           | 8        |
| <a href="#">Information and news</a>   | 10       |
| <a href="#">What's on</a>  | 13       |
| <a href="#">SBP information</a>  | 14       |

## PARTNERS NEWS

### Encouraging community biodiversity

Peter Ross, Suffolk Coastal District Council

The last few years has seen the demand grow for local authority services to embrace many new, local and government initiatives. For SCDC's Countryside Team this has meant less time available to carry out practical conservation work to improve biodiversity. To maintain their commitment to improve biodiversity, the Countryside Team have turned to local communities to help them carry out biodiversity management on District Council owned or managed land.

Two groups in particular, the Wenhaston Commons Group and the Westleton Common Group, have gone from strength to strength and are now self managing and confident enough to produce their own management plans in conjunction with SCDC. The Wenhaston Group have even produced their own Parish Biodiversity Action Plan. Both these groups carry out work to restore heathland, mostly removing gorse, trees and scrub to regenerate heather. At Wenhaston this had seen an



Wenhaston & Westleton Commons groups exchange views on heathland management at an SCDC Conservation Volunteer training day, July 2008. Photo: SCDC

increase in insects, amphibians, reptiles, birds and butterflies, especially silver studded blues. The group have been so successful that they are also managing Westleton Church graveyard, which has since seen an increase in wild flowers.

Out of recent discussions regarding the management of Middleton Moor a new community group has been formed to help manage the area. The greater bulk of management is initiated by SCDC, but more peripheral work is being carried out by the group, which might otherwise not be achieved and has the effect of creating a greater sense of ownership within the local community, which is the main aim of forming any community group.

With this ethos in mind, the SCDC Countryside team are trying to form new groups to help manage Melton Riverside, an area adjacent to Melton railway station and Knodishall Common. A future article will hopefully report on their successes too.

### **Butterfly Futures in Dunwich Forest**

Rob Parker, Suffolk branch Butterfly Conservation

Dunwich Forest is an excellent site for Suffolk's Biodiversity Action Plan (BAP) butterfly species. Although it is mainly mature coniferous plantation, there are many glades and sunlit rides along which White Admirals fly, open grassland areas supporting Graylings, and even elm copses with White-letter Hairstreak. Immediately outside the forest, the Silver-studded Blue flies on Westleton Heath and near Newdelight walks. The opportunity to see 4 of our 5 BAP priority species in one locality, and theoretically all on one July day, is rare, if not unique - making the Dunwich Forest a very special place.

The future of the forest is also quite exciting, with the Forestry Commission having decided to progressively fell the conifers and to give Suffolk Wildlife Trust the opportunity to manage a large proportion of the site for conservation. Dartmoor ponies have already been brought on to the site to graze inside a 6 kilometer boundary fence with the task of controlling the process of natural re-colonisation.

Butterfly Conservation is assisting SWT to manage the transition without harming the existing resident butterflies and to extend and improve the habitat in the longer term. It is planned to establish two butterfly transects to assess the present populations and then to monitor the period of change. All being well, the felling will open fresh areas for our commoner species, and more sunlight will improve the diversity of flora and invertebrates generally, as well as butterflies and moths.

Some of the mature conifers will be left standing to provide shelter from the wind, and to support the honeysuckle that is the larval host plant for the White Admiral. The areas of elm will be managed against Dutch elm disease and allowed to spread, so as to benefit the White-letter Hairstreak. One large compartment of conifer close to Westleton Heath has already been felled and is being managed by the RSPB specifically for reversion to dry grass/heather heath. This area is shielded by standing forest, and should quickly attract Graylings from the adjacent SSSI heath. In due course, it is hoped that Silver-studded Blue will also colonise there naturally.

The whole undertaking is a long-term co-operative venture for the benefit of nature. With care, we can maximise the prospects for a wide range of creatures, especially Suffolk's four BAP butterfly species: White Admiral, Grayling, White-letter hairstreak and Silver studded blue.

## Suffolk Community Barn Owl Project linked to Harvest Mouse study

Steve Piotrowski and Dr Simone Bullion

The short-tailed vole is the barn owl's main prey item, so when vole populations are small, the barn owl struggles to find enough food to raise a family. During the summer of 2008, vole weights were lower than usual and there was an apparent crash in vole numbers towards the end of the owl's breeding season. Although this was part of a natural population cycle for voles, it spelt disaster for barn owls as their food supply became depleted. The situation was exasperated by the disappearance of 1,000s of hectares of grassland as a result of set-aside requirements being lifted. We had many incidents of cannibalism and brood size were low, mostly ones and twos with no second broods. This winter has been wet and cold, so a recovery in the vole population in time for female barn owls to gain sufficient weight (340g) to breed is unlikely. In consequence, this coming breeding season is predicted to be a poor.



Barn owl Photo: Bill Baston

Despite such a difficult summer, the project results showed that Suffolk has the highest number of breeding barn owls recorded since 1932. This means that we are already well on our way to achieving our BAP target of 250 pairs by 2010 from a low point of 125 pairs in 1991. Barn owls have now colonised former strongholds and are seen in places where they have been absent for over 20 years. A total of 176 pairs of barn owl bred in Suffolk's nest-boxes, which is fantastic news. A range of other species was also found occupying barn owl nest boxes as shown in Table 1. The high numbers of stock doves are particularly noteworthy as they are "amber listed" and the UK holds a third of the world population. Conversely, grey squirrels are not so welcome as they will evict barn owls and often surprise monitors as they make a hasty retreat from the box!

**Table 1: Box occupancy 2008**

|               | <i>New Boxes</i> |             | <i>All boxes</i> |             |
|---------------|------------------|-------------|------------------|-------------|
|               | No               | %           | No               | %           |
| Barn Owl      | 90               | 24%         | 176              | 22%         |
| Little Owl    | 9                | 2%          | 15               | 2%          |
| Tawny Owl     | 2                | 1%          | 12               | 1%          |
| Kestrel       | 5                | 1%          | 20               | 2%          |
| Jackdaw       | 61               | 16%         | 81               | 10%         |
| Stock Dove    | 42               | 11%         | 112              | 14%         |
| Grey Squirrel | 5                | 1%          | 9                | 1%          |
| Empty         | 55               | 15%         | 123              | 15%         |
| Misc          | 4                | 1%          | 7                | 1%          |
| Checked       | 273              | 72%         | 553              | 68%         |
| Unchecked     | 104              | 28%         | 256              | 32%         |
| <b>Total</b>  | <b>377</b>       | <b>100%</b> | <b>809</b>       | <b>100%</b> |

*Note Barn Owl includes all signs of Barn Owl*

*Misc is boxes moved, not erected or fallen*

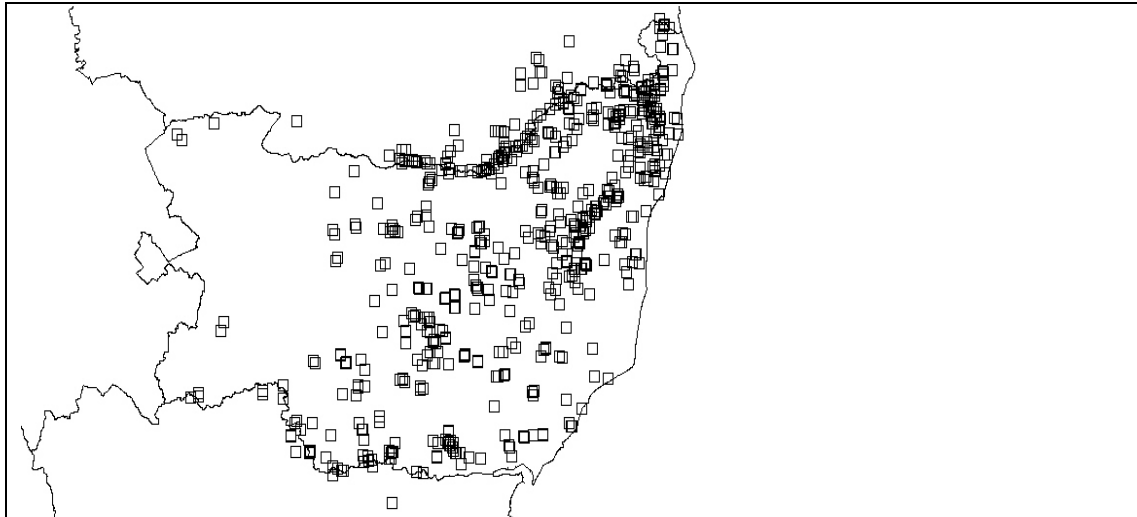
In a poor vole year, barn owls must vary their diet and will select other prey items to survive. One of these is the harvest mouse (*Micromys minutus*), which leads the Suffolk Community Barn Owl Project to expand and link with the Suffolk Wildlife Trust Harvest Mouse Project. The harvest mouse has suffered a 70% decline in numbers since the 1970s due to changes in agricultural practices and rural land use and is now listed as a UK Biodiversity Action Plan species. In order to reverse this decline in Suffolk, the long term goal is to advise landowners on habitat management in areas where harvest mice have been found. SWT is grateful for financial support from the People's Trust for Endangered Species for the first year of this project. With voles at low ebb, 2009 should be good for finding harvest mouse remains in barn owl pellets, so this exciting project will include assessment of barn owl diet by pellet analysis, particularly looking for harvest mice. The Suffolk Wildlife Trust has employed Martha Cowell as a Field Officer and it will be her job to follow up reports of harvest mice remains found in owl pellets. This is groundbreaking methodology as it will be the barn owl that acts a filter to direct the search for harvest mice. Martha will follow up positive records by looking for harvest mice nests in different habitats within the owl's 2km home range area and also to give landowner advice. A total of 115 volunteers have already been trained at recent workshops to identify prey items found in barn owl pellets and there will be further training sessions as the project progresses. Of course, not only will we gain vital information on harvest mice, but also on other small mammals eaten by barn owls. Subsequently, we should gain a better understanding on distribution and population densities of rare species such as the water shrew, water vole, pygmy shrew and yellow-necked mouse.



Barn owl  
Photo: Bill Baston

In 2009, over 130 additional barn owl nest boxes were installed bringing the total number of boxes in Suffolk to over 850 being monitored by the Project. It is likely that we will pass the 1,000 mark this year. The Project Monitoring team is being strengthened by a group of Regional Coordinators who will ensure the nest box data is efficiently collected and recorded.

Figure 1 shows the number and distribution of barn owl boxes that were monitored in 2008. Over this past winter, we have focussed our attention on south and west Suffolk to assist a further range expansion of the barn owl in Suffolk. With the help of grants from the Suffolk Environmental Trust and Dedham Vale AONB Sustainable Development Fund, a number of landowners have been visited in these areas and, hopefully, many important gaps will be filled.



**Fig. 1 Barn owl boxes monitored in 2008**

The Project's team of specialist barn owl conservation advisers have carried out over 150 visits to advise community groups, farmers and landowners on barn owl conservation. To complement the sterling work of the Dedham Vale AONB team, they have been particularly active around Sudbury and Bures and more boxes are planned for this area in the next 12 months. At Assington Mill, students on a straw-bale building course have constructed Suffolk's first barn owl tower, finished off by plaster cladding and a roof. External and internal owl boxes have been placed within the structure and at the time of writing (mid-April 2009), a pair was in residence, so fingers crossed for successful breeding. Although, this building is made of straw, it is amazingly robust and I am confident that neither Mr Wolf nor the elements will blow this house down. The tower is beautifully constructed in idyllic surroundings and for those wishing to see this magnificent structure or want to know more about straw bale building, please visit [info@assingtonmill.com](mailto:info@assingtonmill.com) or telephone Ann Holden on 01787 229953.



Barn owl tower at Assington Mill  
Photo: Steve Piotrowski

## **Suffolk Hedgerow Survey**

Guy Ackers

The Suffolk Hedgerow Survey is advancing well across the County with 148 parishes about to restart from last year or to get started for the first time this season. Currently there are another 90 parishes at the recruitment stage for both surveyors and coordinators, leaving less than 80 to register some interest. No less than 118 parishes have completed.

We are holding our annual training sessions in May for committed volunteers so that they can get started immediately afterwards and we are expecting a bumper year for the starters and good returns from the finishers as numbers build towards the half way stage for completions.

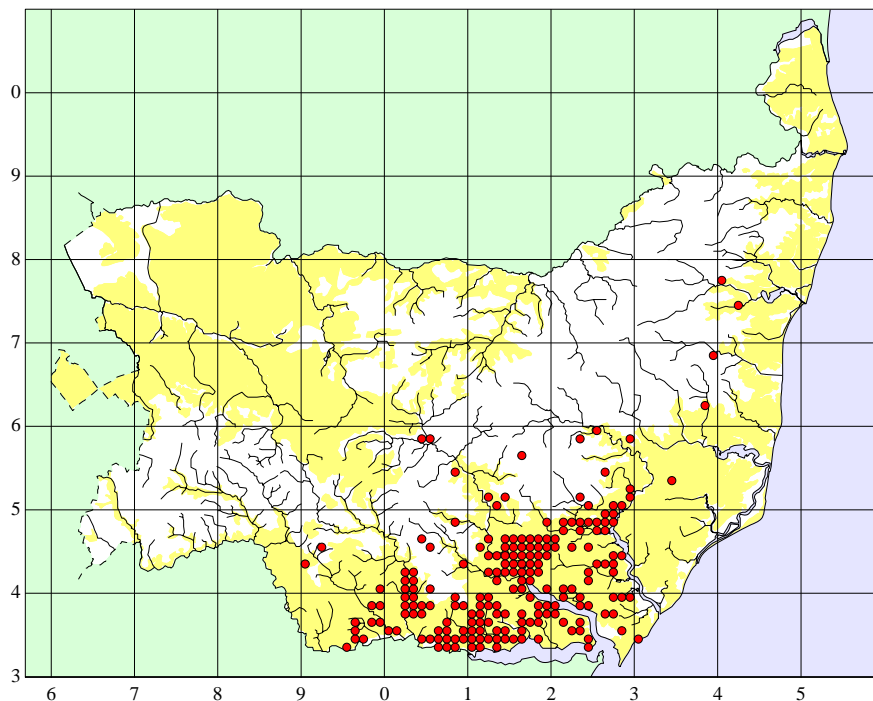
We are also compiling tables under the Landscape Character Assessment types. This will enable us to make comparisons on species richness of hedgerows in parishes on a like-for-like basis. Over half of the 118 completed surveys have been analysed in this way and already very clear synergies are becoming apparent.

As the Project Committee now has representatives from all six District Councils, we are achieving a more comprehensive coverage in the provision of service and back-up to parish surveys. Consequently, the optimum opportunity exists for those not currently participating, to do so and join the Project. Time, however, is running out as we need as many as possible to start before the end of 2010.

### Stag Beetle Distribution

Colin Hawes, Royal Holloway University of London  
Lead for the stag beetle Biodiversity Action Plan in Suffolk

Stag beetle (*Lucanus cervus*) sightings in Suffolk recorded during local and national surveys have been entered on the Suffolk Biological Records Centre database. These records reveal that the species is mainly confined to the southern third of the county in an area between the rivers Deben and Stour. There are significant colonies in Ipswich, Woodbridge and Hadleigh and in a large number of villages across the Shotley and Felixstowe peninsulas. Factors that determine its distribution include the availability of decaying broad-leaved wood, temperature and soil type. The species is predominantly found in areas with the highest accumulated day degrees and light, well-drained soil, such as loam. Stumps and logs of a wide range of broad-leaved tree and shrub species provide food for the larvae. River valleys seem to provide ideal conditions for the species.



Distribution of the stag beetle (*Lucanus cervus*) in Suffolk.  
Resolution 1km square. (Source: SBRC)

Survey work in 2009 is being targeted at establishing more precisely the current distribution of the stag beetle in the county:

- by examining sites at the edge of the species' principal range: **Charsfield, Chelsworth, Cretingham, Flowton, Lavenham, Little Stonham, Monks Eleigh, Stowupland, Wetherden**
- by examining sites within its known range which have the required habitat and environmental conditions but for which there are no known records for the beetle: **Akenham, Campsey Ash, Gt Cornard, Little Glemham, Long Melford, Pettistree, Sudbury, Tunstall**
- by examining sites for which there are historical records but no recent records of the beetle: **Battisford (1950), Clare (1897), Earl Soham (1880), Lowestoft (1899)**
  - by examining sites for which there is only a single record for the beetle to see if a viable population exists: Aldham, Ashfield, **Beccles, Benhall, Bromeswell, Bulmer, Bury St Edmunds, Cotton, Dennington, Elmsett, Framlingham, Gt Waldingfield, Higham, Hintlesham, Monweden, Needham Market, Orford, Shelley, Somersham, Ufford, Wattisham, Wetheringsett, Whatfield, Wickham Market, Witnessham, Yoxford.**

### HOW YOU CAN HELP

It would be an extremely useful addition to the survey effort if residents, or visitors to these sites, would report any sightings of stag beetles (live or dead). Please send your report to Colin Hawes [c.hawes@homecall.co.uk](mailto:c.hawes@homecall.co.uk) or telephone 01473 310678 and include the following information: **where seen**, e.g. my garden (post code/map reference, if possible), **date seen**, **how many seen**, **sex of beetle(s)** (see photos), **beetle activity**, e.g. flying/crawling on pavement, **a photograph of your beetle(s)** would be a valuable contribution.



Female stag beetle  
Photo: Colin Hawes



Male stag beetle  
Photo: Colin Hawes

### Flash of Good News

Green Light Trust

For the **April Flash of Good News** we planned to announce the 50<sup>th</sup> Community-owned WildSpace project. However, during the last few weeks the number has suddenly jumped to an amazing 54. We welcome: 50 Dedham, Essex; 51 St John's Colchester, Essex; 52 Sible Hedingham, Essex; 53 Downham Market, Norfolk 54 Oulton Broad, Suffolk.

While 50 is the golden milestone we've been working towards – and we are holding a special celebration sponsored by Cecil and Larter of Bury St. Edmunds to mark it – the rush of even newer projects will make this celebration *four times more exciting!* We congratulate all concerned and wish everyone a fantastic start to their projects.

## Mid Suffolk District Council sign up as a 'Breathing Places Community'

Carrie Bewick, Countryside Team

Mid Suffolk District Council has signed up as a Breathing Places Community for one year. We are aiming to deliver and support a variety of events and activities across the district to make Mid Suffolk a place where nature can thrive. We are asking people to Do One Thing for nature, however small and simple, to make a difference for wildlife and have fun learning about the natural world. Whether a community group, school or parish council, you can also get involved and run your own activities and events. For maximum media attention why not tie in with one of the three main campaigns this year?

**Springwatch Dirty Weekend - 6/7th June**

**CBeebies Green Balloon Club week – end July**

**Tree O'Clock tree weekend - 5/6 Dec.**

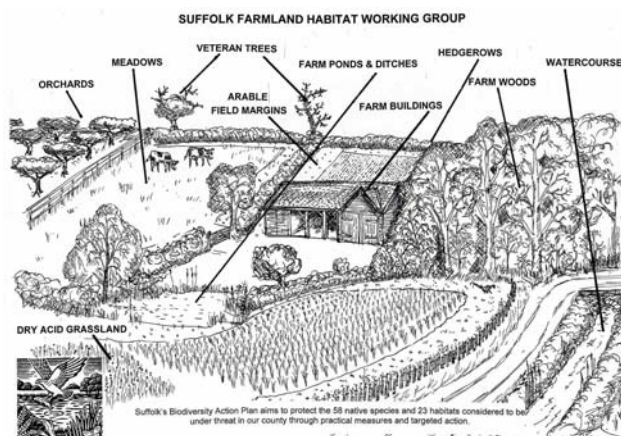
Please contact Carrie Bewick to discuss plans in Mid Suffolk tel: 01449 724632  
email: [carrie.bewick@midsuffolk.gov.uk](mailto:carrie.bewick@midsuffolk.gov.uk).

*"Breathing Places is a major BBC Learning campaign to inspire and motivate people to create and care for nature-friendly green spaces where they live. So far over 10 million people have taken part in the campaign."*

Visit the [Breathing Places website](http://www.bbc.co.uk/breathingplaces/) for further information and to find events near you. To see the **free resources and activities** available from the BBC, visit <http://www.bbc.co.uk/breathingplaces/downloads/>

## Update from Suffolk Biodiversity Partnership

- We are delighted to welcome **Center Parcs – Elveden** to the steering group; we look forward to working with you.
- A huge *Thank You* to **Essex & Suffolk Water** who generously contributed £1,000 to the SBP Project Fund in March.
- The Farmland Habitat Working Group has launched a leaflet for farmers / landowners with simple, practical advice for habitat management. The aim is to support farmers in the fundamental role that they play in the conservation and health of our Suffolk countryside. The leaflet is low-tech, specific to each farm and provides bullet points of practical actions that can make a significant contribution to conservation and to



Farmers / landowners leaflet

improving the health of the farm environment. All farmland HWG partners contributed to this success: RSPB, FWAG, Natural England, Suffolk County Council, Suffolk Wildlife Trust and Suffolk Coasts and Heaths AONB. The illustration shows typical farm habitats shown in the leaflet.

- SPB has made a bid for Performance Reward Grant funding through the Creating Greenest County Delivery Partnership. Two of these projects have gone through on a priority list to be discussed by the Performance Management Group on the 23 May: a **County Wildlife Sites (CWS) review** and **Ancient and semi-natural woodland (ASNW) Initiative**. The funding bid is worth £32,000.

The CWS review will provide up to date information to site owners to promote 'positive conservation management', helping to meet Local Area Agreement (LAA) target NI197, and re-surveys to update the CWS Register will be undertaken. There are 914 County Wildlife Sites in Suffolk, of which there are currently 32% in appropriate management. The target is 50% of sites in 'Positive conservation management' by 2011. The ASNW project will increase the number of woods managed to provide a source of woodfuel. This will benefit wildlife through appropriate management, help to meet LAA target NI197 and reduce carbon emissions through the use of woodfuel.

- **Stanford Training area visit**

The Brecks Heath Forum was fortunate in being able to visit the Stanford Training Area (STANTA) in April. Management issues were discussed on site, including hefted sheep management, rabbit grazing and management for invertebrates as well as for stone curlews. We visited 4 sites including grass and heather heaths and heathland re-created from conifer plantation; some of these developed from previous agricultural land.

The discussions yielded fresh ideas for site management, such as encouraging disturbance and creating a mosaic of habitats including bare ground. The group included Isobel Alonso, the national lead for lowland heathland and comprised representatives from Natural England, Suffolk County Council, the Brecks Partnership, University of East Anglia, Forestry Commission, Elveden Estate, Norfolk Wildlife Trust, St Edmundsbury Borough Council and Forest Heath District Council.

*'Thank you' to Bev Nicholls and Ian Levett of Natural England, Paul Evans of the Defence Estates and Lt Col Simon Lloyd, Commander of the Defence Training (East), for this rare opportunity to visit an important Breckland site.*



Discussions on grazing in a dune area, STANTA. Photo: Sue Hooton

## INFORMATION and NEWS

### Centre for Hydrology & Ecology – UK butterflies numbers fall to new low

*“Butterfly numbers have fallen to a new low, according to data from the UK Butterfly Monitoring Scheme, operated by Butterfly Conservation and ALTER-Net partner, the Centre for Ecology & Hydrology.*

*The statistics confirm conservationists' fears that 2008 was the poorest summer for butterfly numbers for more than 25 years. The relative absence of breeding during the dire summer of 2007, the wettest on record, impacted seriously on butterfly numbers during 2008. Heavy rain makes it hard for butterflies to survive - they can't fly in the rain - and that means they can't reach the nectar they feed on.*

*For twelve species 2008 was their worst year since records began in the mid 1970s. The list includes several once familiar garden visitors whose numbers have dwindled in recent years, including the Orange-tip, a beautiful spring butterfly, and the Small Tortoiseshell, which has declined drastically over the last decade. The figures also show that some butterflies are rapidly becoming extinct in parts of the country.*

*Butterflies are important as an indicator species, alerting us to underlying problems with the environment. If butterfly numbers are falling, inevitably other wildlife is also suffering. British butterflies have been declining steadily for years and the new statistics show that recent wet summers have accelerated these declines.”*

| Selected Butterfly Species % Change between 2007 and 2008 |     |
|---|-----|
| Clouded Yellow  | -90 |
| Painted Lady  | -81 |
| Wood White  | -66 |
| Black Hairstreak  | -65 |
| Pearl-bordered Fritillary                                 | -56 |
| Green Hairstreak  | -54 |
| High Brown Fritillary                                     | -49 |
| Marsh Fritillary  | -45 |
| Small Tortoiseshell                                       | -45 |
| Red Admiral   | -44 |
| White-letter Hairstreak                                   | -40 |
| Peacock   | -35 |
| Brimstone   | -32 |
| Dark Green Fritillary                                     | -32 |
| Small Copper  | -29 |
| Orange Tip  | -26 |

*Read the full story at*

[http://www.ceh.ac.uk/news/news\\_archive/2009\\_news\\_item\\_14.html](http://www.ceh.ac.uk/news/news_archive/2009_news_item_14.html)

### Environment Agency – State of the Environment Report for the East of England 2009.

The report includes information on UK BAP priority habitats (lowland grass and heath, freshwater, fens and reedbeds), the Great Fen Project, Impacts of climate change, wetland birds, the Broads, woodland and climate change and fish. There are also maps and graphs relating to air quality, biodiversity, climate change, flooding, people and communities, waste, water and agriculture.

Visit this [website](#) to view the report

## **Natural England Standing Advice**

*“This guidance will help Local Authority planners or ecological consultants decide when to request or carry out protected species surveys to accompany a planning application. The survey requirements are based upon the habitats that are present on an application site and the likelihood of a species being present. This guidance should result in higher quality planning applications and fewer objections from Natural England (and subsequent associated delays to decision timetables) due to lack of survey information.”*

[http://www.naturalengland.org.uk/regions/south\\_east/ourwork/standingadvice/default.aspx](http://www.naturalengland.org.uk/regions/south_east/ourwork/standingadvice/default.aspx)

## **£11 million to protect our seas from climate change**

A five-year, £11million study into the effects of climate change on Britain’s seas has been announced as scientists warn of more acidic seas affecting the food chain. Ocean acidity, caused by increased amounts of carbon dioxide (CO<sub>2</sub>) in the sea, has risen 30 per cent in the last 200 years, faster than any time in the last 65 million years, with serious implications for sealife and our climate, according to a new report.

Further info: <http://www.defra.gov.uk/news/2009/090428.htm>

## **UK biodiversity indicators**

An updated overview of biodiversity in the UK was published 3 April. Of 33 component measures assessed within the 18 indicators: 11 measures show long-term deterioration; 9 show long-term improvement; one shows little or no overall long-term change; 11 had insufficient data for long-term assessment; and one is not assessed. A table showing the assessments for each indicator, using a system of traffic lights, over the long term and since 2000, is shown on the website:

<http://www.defra.gov.uk/news/2009/090403a.htm>

## **Plan to halt declining bee numbers launched**

Defra and the Welsh Assembly Government published ‘Healthy Bees’ in March, a plan to protect and improve the health of honey bees in England and Wales. The ten year plan was drafted in consultation with beekeeping organisations and aims to sustain honey bee populations by supporting beekeepers to ensure effective biosecurity measures are adopted to minimise risk from pests and disease. Further information:

<http://www.defra.gov.uk/news/2009/090309a.htm>

## **In Leaf newsletter**

Issue 9 of ‘In Leaf’, the newsletter of the Anglian Woodland Project, is available. The Project is a partnership between the county councils of Bedfordshire, Essex, Norfolk and Suffolk. Highlights include: Ancient and wet woodlands, Suffolk traditional orchard survey, Deer Initiative, Ponies graze Dunwich Forest. For further information, contact Gary Battell tel: 01473 264776, email: [gary.battell@suffolk.gov.uk](mailto:gary.battell@suffolk.gov.uk)

## **Million Ponds Project**

The Pond Creation Toolkit with advice on creating new ponds that contribute to the Million Ponds Project targets, is available to download FREE at

[www.pondconservation.org.uk/millionponds/pondcreationtoolkit/](http://www.pondconservation.org.uk/millionponds/pondcreationtoolkit/). New ponds that

meet the Million Ponds Project criteria can be registered at

[www.pondconservation.org.uk/millionponds/reporting](http://www.pondconservation.org.uk/millionponds/reporting). The three criteria are:

1. a clean water source, 2. left to colonise naturally, 3. left to thrive without undue disturbance.

### **Orchard barn 'Tree to Timber' event Feb 09**

An account of the day and photographs of the milling, hewing, oak arriving by horse, shingle-making, pole-lathing events can be viewed on the [Orchard Barn website](#).

### **Marine and Coastal Access Bill update**

The Bill completed its Committee stage on 21 April and will commence Report Stage on 5 May. Key areas covered by the Bill:

- Marine Management Organisation (factsheet published 23 April)
- Marine Planning
- Marine Licensing
- Marine Nature Conservation
- Fisheries Management and Marine Enforcement
- Environmental Data and Information
- Migratory and Freshwater Fisheries
- Coastal Access
- Coastal and Estuary Management

For further information on what the Bill covers, what it means for individuals, industry and environmental groups and what happens next, go to:

<http://www.defra.gov.uk/marine/legislation/>

### **Planners Guide to the Rural Economy 2008**

The guide was launched at an INTend conference in March 2009 – *Planning for vibrant communities*. Biodiversity appears under 'Policy implications and key issues, PPS9' (p. 48). There is information on surveys for reptiles, bats, great crested newts, otters and water voles, dormice, as well as information on Protected Species legislation (including a brief mention of the NERC Act 2006).

The document can be downloaded from the [INTend website](#).

### **Norfolk Non-Native Species Initiative**

The April newsletter is now available from the co-ordinator, Michael Sutton-Croft. For details visit the [NNNSI website](#). Highlights include Dr Carl Sayer on the project to save the native crucian carp in North Norfolk and Barry Madden providing an update on the progress of the NWTs 'Wildlife Invaders' survey.

### **Biodiversity in the East of England**

To find out what's going on in our region, check the websites for the county Biodiversity Partnerships forum:

[Norfolk, Bedfordshire and Luton](#), [Essex](#), [Cambridgeshire and Peterborough](#).

## WHAT'S ON

### **12 and 13 May - Sixth Non-Native Species Stakeholder Forum**

*The Non-native Species Framework Strategy One Year On*

The Royal York Hotel, Station Parade, York

Further information: [National Biodiversity Network, News and Events](#)

### **30 May to 7 June 2009 - RSPB Love Nature Collection Week**

Volunteers from the RSPB and the local community will be carrying out street collections at hundreds of sites around the country. In return for donations, members of the public will be given pin badges and giveaways detailing some of the amazing projects the RSPB are involved in. We are inviting people to give a couple of hours of their time to collect in the following towns to raise money for wildlife and conservation, locally, nationally and internationally.

Our collections in Suffolk are from 9:30am - 5:30pm in the following locations:

**Bury St Edmunds - Wed 3 June**

**Lowestoft, Ipswich & Woodbridge - Fri 5 June**

**Southwold - Sat 6 June**

Please call Gena on 01603 697521 or email [gena.correale-wardle@rspb.org.uk](mailto:gena.correale-wardle@rspb.org.uk) for more locations, information or a registration pack.

### **1, 2, 3 June - International Conference on Biodiversity Informatics**

(Biodiversity Informatics is a young field that is making diverse classes of biodiversity data available online and putting these data to work for science and society)

Queen Elizabeth Conference Centre in London

Further information: [National Biodiversity Network, News and Events](#)

### **23-26 June Green Week, Brussels**

Environmental conference and exhibition; this year's theme is *Climate change: act and adapt*.

Further information: [Europa – European Commission - Environment](#)

### **Symposium on Ecosystem Services**

Friday 4 September at RGS in London

'Creating a new prosperity: Fresh approaches to ecosystem services and human well-being.' Event organised by FRESH, University of Nottingham and sponsored by Natural England, Defra and IWAM. Invitation can be downloaded [here](#).

**Various wildlife events - [Suffolk Wildlife Trust](#) , [National Trust](#) , [RSPB](#)**

### **Correction**

*The February Partners' newsletter featured Suffolk's tree sparrows (page 5). With apologies, the photograph should have been credited to **Bill Baston** and not to Steve Piotrowski.*

\*\*\*\*\*

## **SBP information**

*If you would like to share information on how your organisation is benefiting biodiversity in Suffolk, please contact Gen Broad, Suffolk Biodiversity Officer.  
Tel: 01473 264308, Mobile: 0789 4885337, email:gen.broad@suffolk.gov.uk*

**Deadline for June 2009 newsletter: Monday 22 June 2009.**

SBP is a partnership comprised of conservation organisations, statutory bodies, local authorities, businesses and not-for-profit organisations working throughout the county of Suffolk on behalf of wildlife. The UK's Biodiversity Action Plan is delivered at a local level by members of the Partnership – for further information visit [www.suffolk.gov.uk/Environment/Biodiversity](http://www.suffolk.gov.uk/Environment/Biodiversity).

|   |
|---|
| <p>Suffolk Biodiversity Partnership consists of:<br/>Babergh District Council, Center Parcs – Elveden, Environment Agency, Forest Heath District Council, FWAG, Ipswich Borough Council, Mid Suffolk District Council, Natural England, RSPB, St. Edmundsbury Borough Council, Suffolk Biological Records Centre, Suffolk Naturalist's Society, Suffolk Wildlife Trust, National Trust, Suffolk County Council, Suffolk Coastal District Council, Waveney District Council.</p> |
|---|